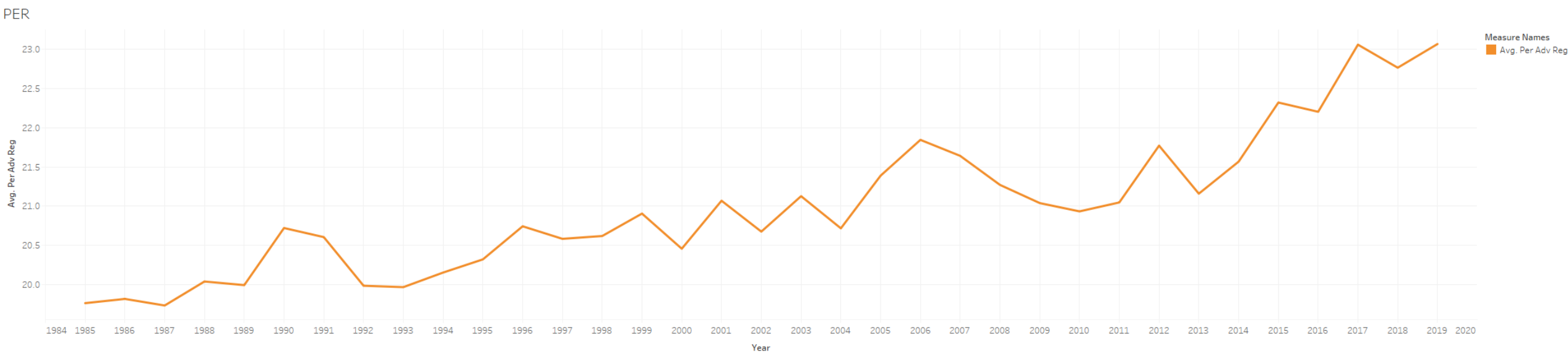


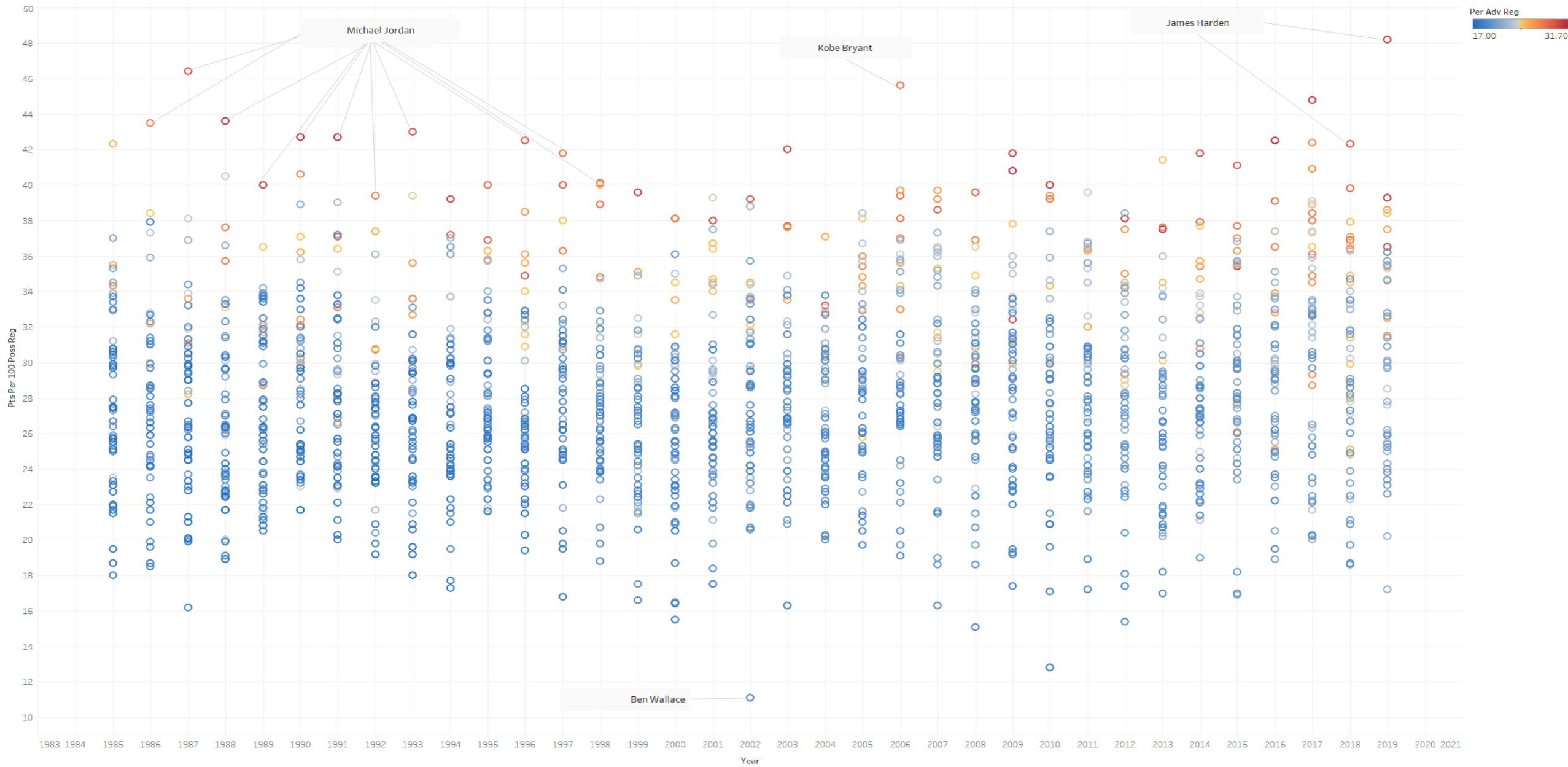
Average PER for Top 50 Players



The trend of Avg. Per Adv Reg for Year. Color shows details about Avg. Per Adv Reg. The data is filtered on G and Mp Per G Reg. The G filter ranges from 15 to 82. The Mp Per G Reg filter includes values greater than or equal to 10.

Top 50 Players – Points per 100 possessions

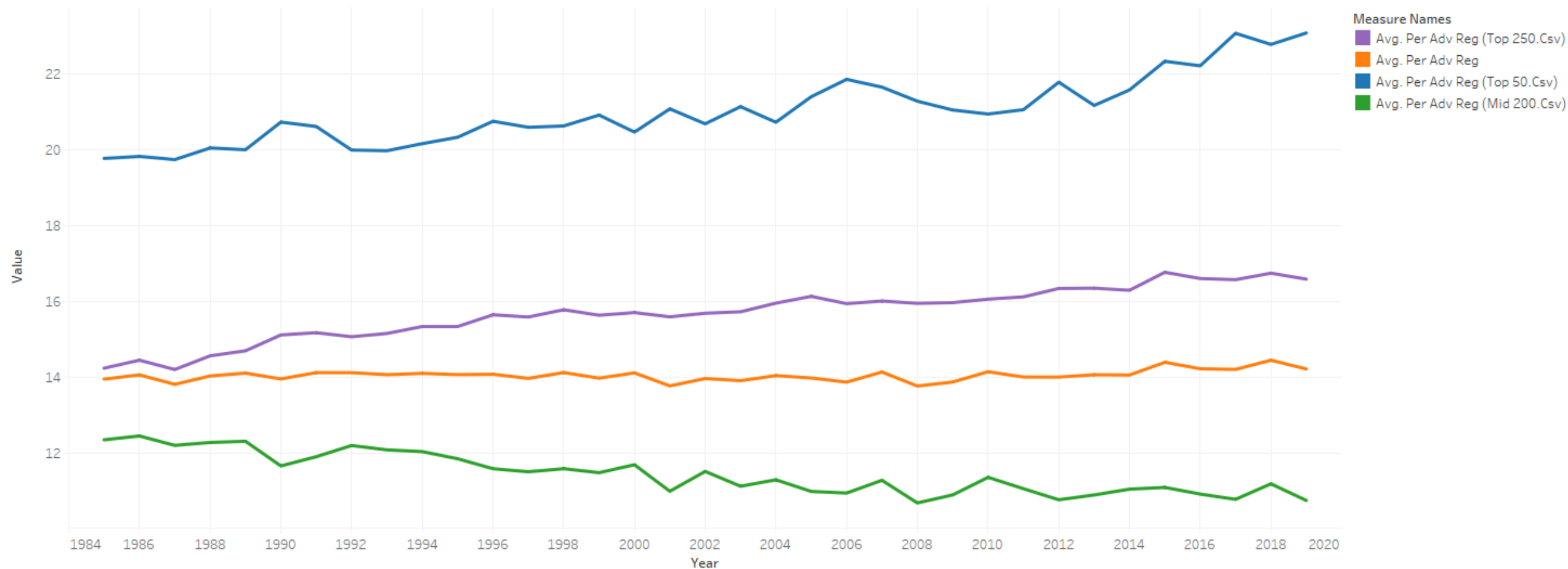
Sheet 1



Year vs. Pts Per 100 Poss Reg. Color shows details about Per Adv Reg. The data is filtered on G and Mp Per G Reg. The G filter ranges from 16 to 82. The Mp Per G Reg filter ranges from 10.1 to 43.7.

PER Comparisons YoY

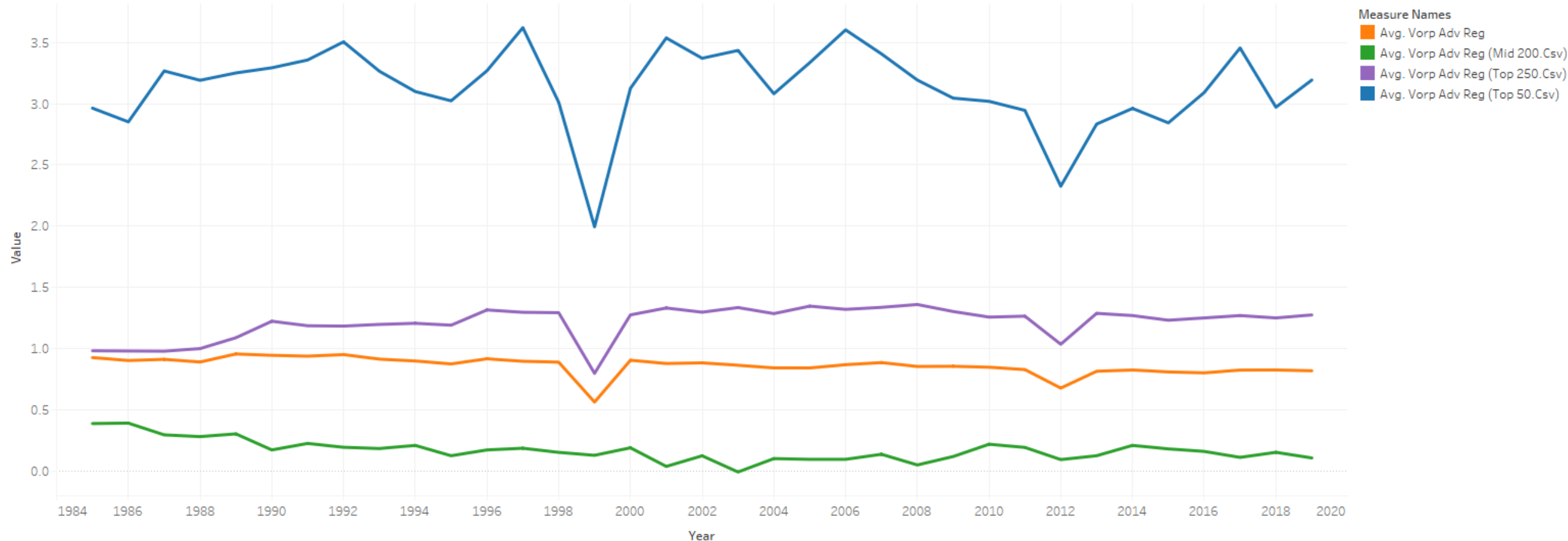
PER



The trends of Avg. Per Adv Reg (Top 250.Csv), Avg. Per Adv Reg, Avg. Per Adv Reg (Top 50.Csv) and Avg. Per Adv Reg (Mid 200.Csv) for Year. Color shows details about Avg. Per Adv Reg (Top 250.Csv), Avg. Per Adv Reg, Avg. Per Adv Reg (Top 50.Csv) and Avg. Per Adv Reg (Mid 200.Csv). The data is filtered on G and Mp Per G Reg. The G filter ranges from 15 to 82. The Mp Per G Reg filter includes values greater than or equal to 10.

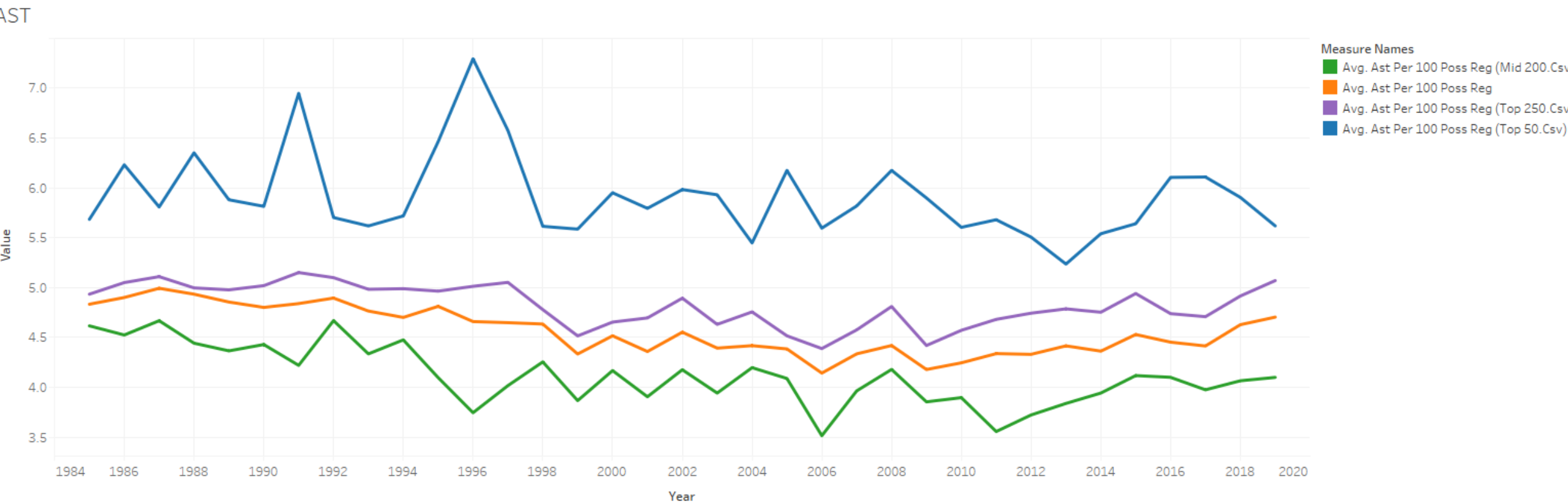
VORP Comparisons YoY

VORP



The trends of Avg. Vorp Adv Reg, Avg. Vorp Adv Reg (Mid 200.Csv), Avg. Vorp Adv Reg (Top 250.Csv) and Avg. Vorp Adv Reg (Top 50.Csv) for Year. Color shows details about Avg. Vorp Adv Reg, Avg. Vorp Adv Reg (Mid 200.Csv), Avg. Vorp Adv Reg (Top 250.Csv) and Avg. Vorp Adv Reg (Top 50.Csv). The data is filtered on G and Mp Per G Reg. The G filter ranges from 15 to 82. The Mp Per G Reg filter includes values greater than or equal to 10.

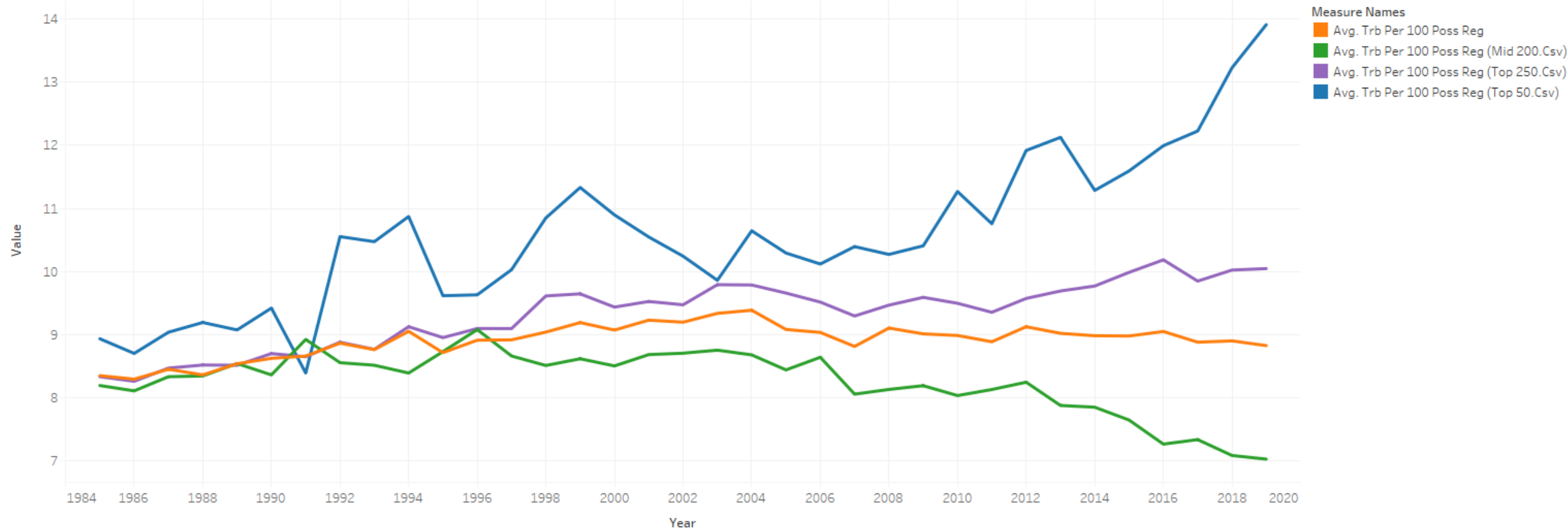
Assists Per 100 Possessions Comparison YoY



The trends of Avg. Ast Per 100 Poss Reg (Mid 200.Csv), Avg. Ast Per 100 Poss Reg, Avg. Ast Per 100 Poss Reg (Top 250.Csv) and Avg. Ast Per 100 Poss Reg (Top 50.Csv) for Year. Color shows details about Avg. Ast Per 100 Poss Reg (Mid 200.Csv), Avg. Ast Per 100 Poss Reg, Avg. Ast Per 100 Poss Reg (Top 250.Csv) and Avg. Ast Per 100 Poss Reg (Top 50.Csv). The data is filtered on G and Mp Per G Reg. The G filter includes values greater than or equal to 11. The Mp Per G Reg filter includes values greater than or equal to 10.

Total Rebounds per 100 possessions Comparison YoY

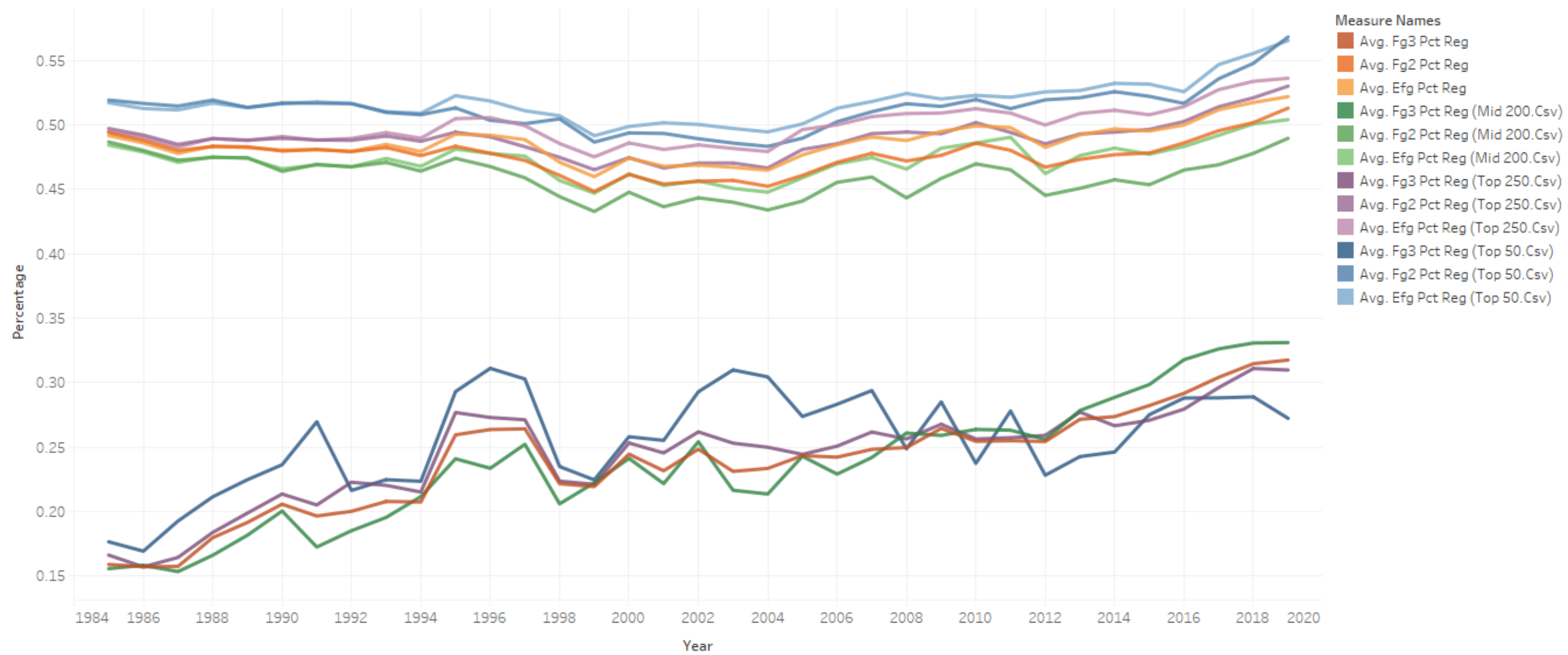
TRB



The trends of Avg. Trb Per 100 Poss Reg, Avg. Trb Per 100 Poss Reg (Mid 200.Csv), Avg. Trb Per 100 Poss Reg (Top 250.Csv) and Avg. Trb Per 100 Poss Reg (Top 50.Csv) for Year. Color shows details about Avg. Trb Per 100 Poss Reg, Avg. Trb Per 100 Poss Reg (Mid 200.Csv), Avg. Trb Per 100 Poss Reg (Top 250.Csv) and Avg. Trb Per 100 Poss Reg (Top 50.Csv). The data is filtered on G and Mp Per G Reg. The G filter includes values greater than or equal to 11. The Mp Per G Reg filter includes values greater than or equal to 10.

Efficiency Comparison YoY

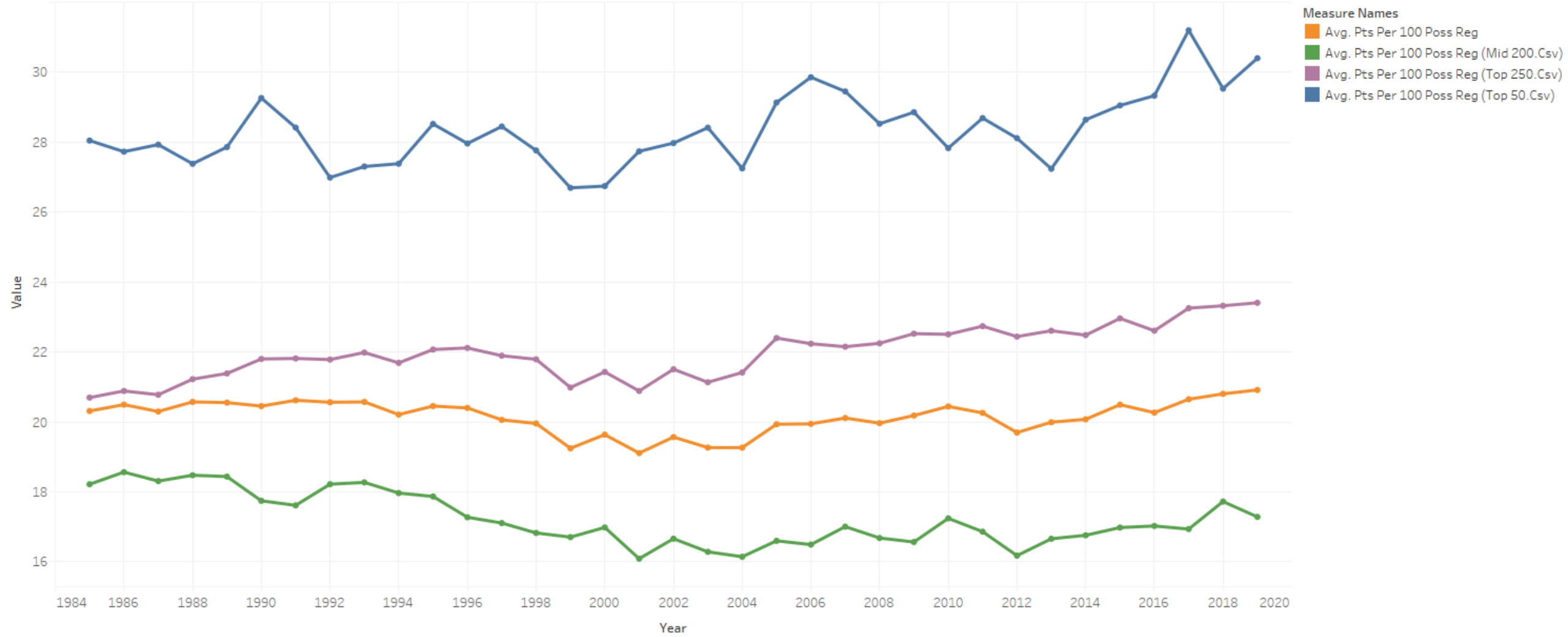
FG%



The trends of Avg. Fg3 Pct Reg, Avg. Fg2 Pct Reg, Avg. Efg Pct Reg, Avg. Fg3 Pct Reg (Mid 200.Csv), Avg. Fg2 Pct Reg (Mid 200.Csv), Avg. Efg Pct Reg (Mid 200.Csv), Avg. Fg3 Pct Reg (Top 250.Csv), Avg. Fg2 Pct Reg (Top 250.Csv), Avg. Efg Pct Reg (Top 250.Csv), Avg. Fg3 Pct Reg (Top 50.Csv), Avg. Fg2 Pct Reg (Top 50.Csv) and Avg. Efg Pct Reg (Top 50.Csv) for Year. Color shows details about Avg. Fg3 Pct Reg, Avg. Fg2 Pct Reg, Avg. Efg Pct Reg, Avg. Fg3 Pct Reg (Mid 200.Csv), Avg. Fg2 Pct Reg (Mid 200.Csv), Avg. Efg Pct Reg (Mid 200.Csv), Avg. Fg3 Pct Reg (Top 250.Csv), Avg. Fg2 Pct Reg (Top 250.Csv), Avg. Efg Pct Reg (Top 250.Csv), Avg. Fg3 Pct Reg (Top 50.Csv), Avg. Fg2 Pct Reg (Top 50.Csv) and Avg. Efg Pct Reg (Top 50.Csv). The data is filtered on G and Mp Per G Reg. The G filter includes values greater than or equal to 11. The Mp Per G Reg filter includes values greater than or equal to 10.

Points per 100 possessions Comparison YoY

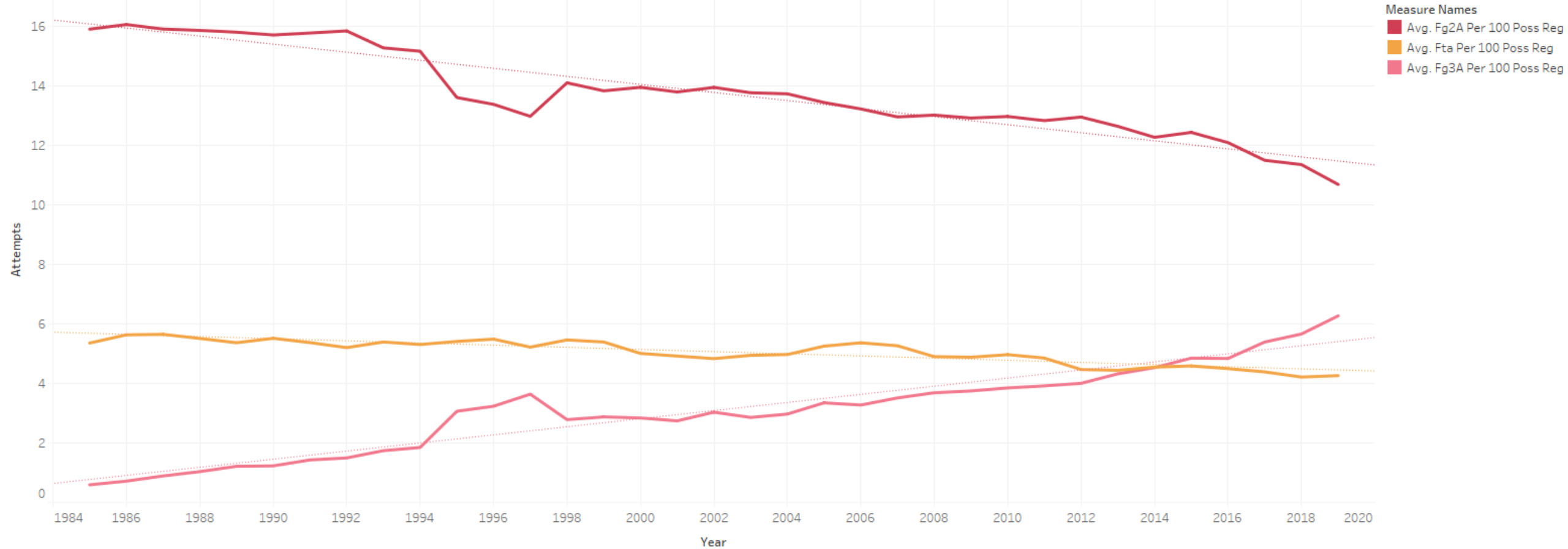
PTS



The trends of Avg. Pts Per 100 Poss Reg, Avg. Pts Per 100 Poss Reg (Mid 200.Csv), Avg. Pts Per 100 Poss Reg (Top 250.Csv) and Avg. Pts Per 100 Poss Reg (Top 50.Csv) for Year. Color shows details about Avg. Pts Per 100 Poss Reg, Avg. Pts Per 100 Poss Reg (Mid 200.Csv), Avg. Pts Per 100 Poss Reg (Top 250.Csv) and Avg. Pts Per 100 Poss Reg (Top 50.Csv). The data is filtered on G and Mp Per G Reg. The G filter includes values greater than or equal to 11. The Mp Per G Reg filter includes values greater than or equal to 10.

Field Goals Attempted per 100 possessions Comparison YoY

FGA



The trends of Avg. Fg2A Per 100 Poss Reg, Avg. Fta Per 100 Poss Reg and Avg. Fg3A Per 100 Poss Reg for Year. Color shows details about Avg. Fg2A Per 100 Poss Reg, Avg. Fta Per 100 Poss Reg and Avg. Fg3A Per 100 Poss Reg. The data is filtered on G and Mp Per G Reg. The G filter includes values greater than or equal to 11. The Mp Per G Reg filter includes values greater than or equal to 10.

Points per game by team Comparison YoY

Sheet 1

